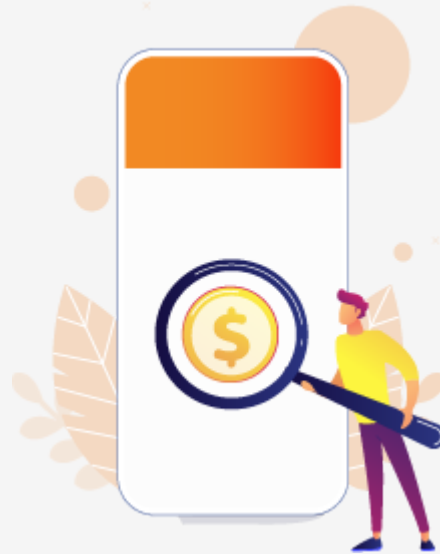


Mobile App Testing Effort Estimation

Greetings from **testbytes!**



Dear husitecuh,

Thank you for using our cost estimation calculator.

Estimation for your requirement is presented in 3 different break-up for better understanding

- 1) First break-up is based on planning and execution of tests
- 2) Second is the effort involved in testing various modules of your app
- 3) Third is the effort estimation of types of testing that is going to be used on your app

Specifications

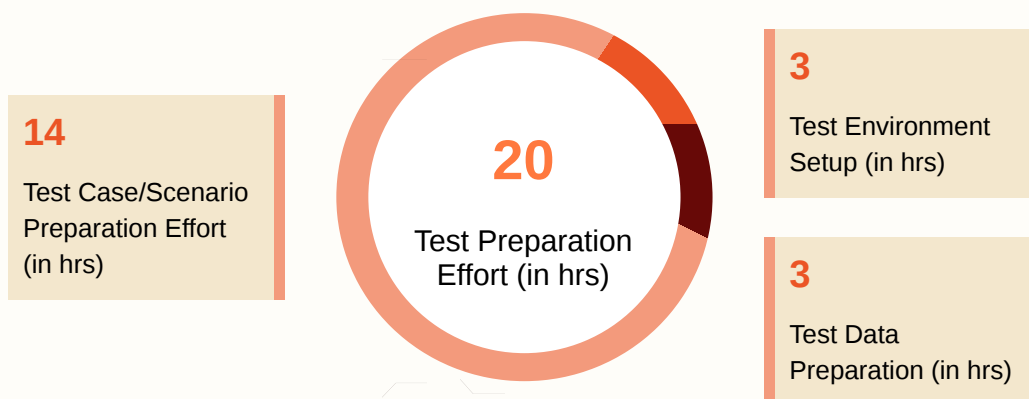
User Preferences

Domain	E-commerce
Platforms	Android, Windows
No: of Testing Modules	5
Avg: Screens Per Module	5
Total: No of Screens	25
No: of Devices	10
No: of external Interface	3

Default Type of Testing	Functional Testing, Usability Testing, Compatibility Testing
Type of Testing (Opted)	Localisation Testing, Automation Testing
How Complex	Simple
No: of Cycles	3
No: of Test Cases	24

Test Execution Effort Breakdown

Test Preparation Effort



Test Execution Effort

Cycles	Test Preparation	Test Execution	Defect Reporting	Retesting (if testcase failed)
1	3	20	4	0
2	2	11	2	4
3	1	8	1	4
Total	6	39	7	8
Total Test Cycle Execution Efforts (in hrs)				60

Compatibility Testing (in hrs) (10 Devices)

7




Total Efforts (in hrs)

87

Effort involved in testing various technologies

Technology	Efforts (Hrs.)
Responsive testing	13
Android App	26
iOS App	0
Windows App	26
Other Features	1
Database	1
Webservices	13
Admin Panel	7
Total	87

Effort involved in types of testing

 Functional Testing	67
 Usability Testing	13
 Compatibility Testing	7

Timeline 2 Month

Default Testing Effort is

87 Hrs

and Cost Range is

\$479.00 - \$653.00 USD

* The cost has been generated by our in-house system with 85-95% accuracy. Variations can happen owing to various factors.

Type of Testing (opted)	Efforts (Hrs.)
Localisation Testing	120
Automation Testing	83
Automation Script Effort	Script Execution Effort
63	20

* Test Scenario for automation is based on the existing ones. So, effort is excluded from the automation effort calculation.

Apart from your chosen types of testing, listed below are the effort involved in other types to ensure that your product is as robust as it can get.

If you wish to know why you need them Read [Here](#)

Type of Testing (optional)	Efforts (Hrs.)
Load Performance Testing	40
Beta Testing	120
Installation Testing	24

Security Penetration Testing	80
Graybox Testing	40
Blackbox Testing	40

To ensure maximum stability, security and scalability your app it must go other forms of testing (mentioned at the estimation part).

If you wish to opt for other types of testing the estimated cost,effort and timeline would be,

Expected Timeline	Overall Effort	Overall Cost
2 Months	290 hrs	\$1,595.00 - \$2,175.00 USD

If you have any query regarding the estimation feel free to contact us at



www.testbytes.net



+1 929 552 0053



+918113865000

- We are now **96K+** on **LinkedIn**

[Join us](#)