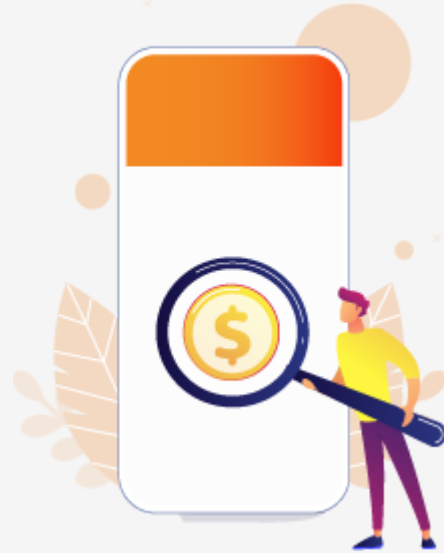


# Mobile App Testing Effort Estimation

Greetings from **testbytes!**



Dear probytesnextjs,

Thank you for using our cost estimation calculator.

Estimation for your requirement is presented in 3 different break-up for better understanding

- 1) First break-up is based on planning and execution of tests
- 2) Second is the effort involved in testing various modules of your app
- 3) Third is the effort estimation of types of testing that is going to be used on your app

Specifications

User Preferences

Domain	Manufacturing
Platforms	Ios
No: of Testing Modules	15
Avg: Screens Per Module	15
Total: No of Screens	225
No: of Devices	40
No: of external Interface	10
Default Type of Testing	Functional Testing, Usability Testing,

Type of Testing (Opted)

Localisation Testing, Automation Testing, Load Performance Testing, Beta Testing

Chosen Security Testing Type

How Complex	Complex
No: of Cycles	4
No: of Test Cases	4669

## Test Execution Effort Breakdown

### Test Preparation Effort



### Test Execution Effort

Cycles	Test Preparation	Test Execution	Defect Reporting	Retesting (if testcase failed)
1	514	3852	770	0
2	360	2157	324	755
3	257	1541	231	755
4	154	925	139	755
<b>Total</b>	<b>1285</b>	<b>8475</b>	<b>1464</b>	<b>2265</b>

Total Test Cycle Execution Efforts (in hrs) 13489




Compatibility Testing (in hrs) (40 Devices) 29610

**Total Efforts (in hrs) 46373**

### Effort involved in testing various technologies

Technology	Efforts (Hrs.)
Responsive testing	6956
Android App	0
iOS App	27824
Windows App	0
Other Features	464
Database	464
Webservices	6956
Admin Panel	3710
<b>Total</b>	<b>46373</b>

### Effort involved in types of testing

 <b>Functional Testing</b>	9807
 <b>Usability Testing</b>	6956
 <b>Compatibility Testing</b>	29610

Total effort is

**46373** Hrs

Total amount is

**20,346,744.00 -  
68,516,118.00** INR

\* The cost has been generated by our in-house system with 85-95% accuracy. Variations can happen owing to various factors.

Type of Testing (opted)	Efforts (Hrs.)
Localisation Testing	120
Automation Testing	27819
Load Performance Testing	40
Beta Testing	120

Automation Testing

Testcase Scenario	Automation Script Effort	Script Execution Effort
<b>2614</b>	<b>12256</b>	<b>15563</b>

\* Test Scenario for automation is based on the existing ones. So, effort is excluded from the automation effort calculation.

**Apart from your chosen types of testing, listed below are the effort involved in other types to ensure that your product is as robust as it can get.**

If you wish to know why you need them Read [Here](#)

Type of Testing (optional)	Efforts (Hrs.)
Installation Testing	24
Security Penetration Testing	80
Graybox Testing	40
Blackbox Testing	40

To ensure maximum stability, security and scalability your app it must go other forms of testing (mentioned at the estimation part).

If you wish to opt for other types of testing the estimated cost,effort and timeline would be,

Expected Timeline	Overall Effort	Overall Cost
5 Months	74472 hrs	32,675,537.00 - 110,032,396.00

If you have any query regarding the estimation feel free to contact us at



[www.testbytes.net](http://www.testbytes.net)



+1 929 552 0053



+918113865000

- We are now **96K+** on **LinkedIn**

[Join us](#)