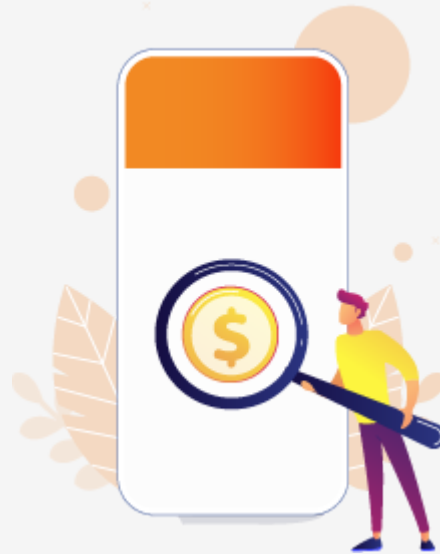


Mobile App Testing Effort Estimation

Greetings from **testbytes!**



Dear probytesnextjs,

Thank you for using our cost estimation calculator.

Estimation for your requirement is presented in 3 different break-up for better understanding

- 1) First break-up is based on planning and execution of tests
- 2) Second is the effort involved in testing various modules of your app
- 3) Third is the effort estimation of types of testing that is going to be used on your app

Specifications

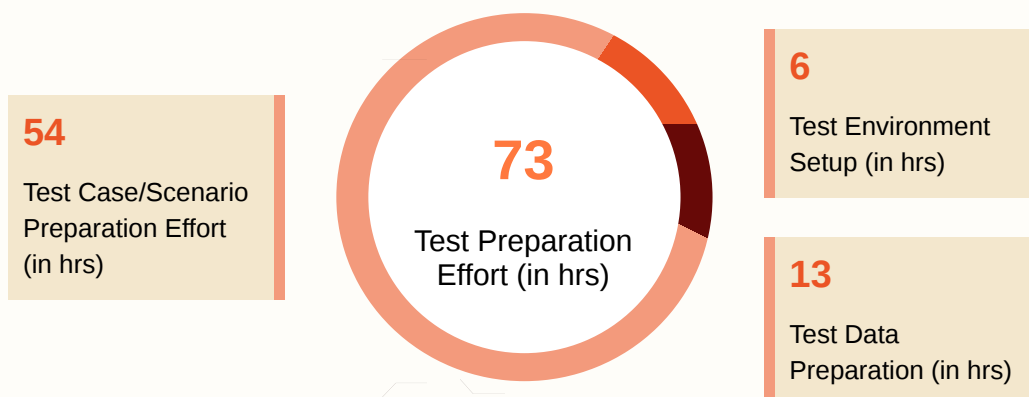
User Preferences

Domain	Retail
Platforms	Android
No: of Testing Modules	10
Avg: Screens Per Module	5
Total: No of Screens	50
No: of Devices	20
No: of external Interface	10

Default Type of Testing	Functional Testing, Usability Testing, Compatibility Testing
Type of Testing (Opted)	Automation Testing
How Complex	Complex
No: of Cycles	4
No: of Test Cases	95

Test Execution Effort Breakdown

Test Preparation Effort



Test Execution Effort

Cycles	Test Preparation	Test Execution	Defect Reporting	Retesting (if testcase failed)
1	11	79	16	0
2	7	44	7	16
3	5	32	5	16
4	3	19	3	16
Total	26	174	31	48

Total Test Cycle Execution Efforts (in hrs)	279
Compatibility Testing (in hrs) (20 Devices)	210
Total Efforts (in hrs)	562

Effort involved in testing various technologies

Technology	Efforts (Hrs.)
Responsive testing	84
Android App	337
iOS App	0
Windows App	0
Other Features	6
Database	6
Webservices	84
Admin Panel	45
Total	562

Effort involved in types of testing

■ Functional Testing	268
■ Usability Testing	84
■ Compatibility Testing	210

Timeline 4 Month

Default Testing Effort is

562 Hrs

and Cost Range is

\$3,091.00 - \$4,215.00

USD

* The cost has been generated by our in-house system with 85-95% accuracy.
Variations can happen owing to various factors.

Type of Testing (opted)	Efforts (Hrs.)
Automation Testing	407
Automation Script Effort	Script Execution Effort
249	158

* Test Scenario for automation is based on the existing ones. So, effort is excluded from the automation effort calculation.

Apart from your chosen types of testing, listed below are the effort involved in other types to ensure that your product is as robust as it can get.

If you wish to know why you need them Read [Here](#)

Type of Testing (optional)	Efforts (Hrs.)
Load Performance Testing	40
Beta Testing	120
Localisation Testing	120

Installation Testing	24
Security Penetration Testing	80
Graybox Testing	40
Blackbox Testing	40

To ensure maximum stability, security and scalability your app it must go other forms of testing (mentioned at the estimation part).

If you wish to opt for other types of testing the estimated cost,effort and timeline would be,

Expected Timeline	Overall Effort	Overall Cost
4 Months	969 hrs	\$5,330.00 - \$7,268.00 USD

If you have any query regarding the estimation feel free to contact us at



www.testbytes.net



+1 929 552 0053



+918113865000

- We are now **96K+** on **LinkedIn**

[Join us](#)